



Superintendent Report of Progress

Georgetown Public Schools

October 26, 2023

School Choice

- What it is and what it is not
- Historical perspective
- Financial Implications





The inter-district school choice program allows families to enroll their children in schools in communities other than in the city or town or regional school district where they reside.



School Choice

Receiving districts must use a random selection process for admission

Receiving districts cannot consider a student's disciplinary record prior to admission or use it to rescind admission

Application questions should not ask about special education status, discipline, or attendance records

Only siblings of current school choice students can have preference for available seats

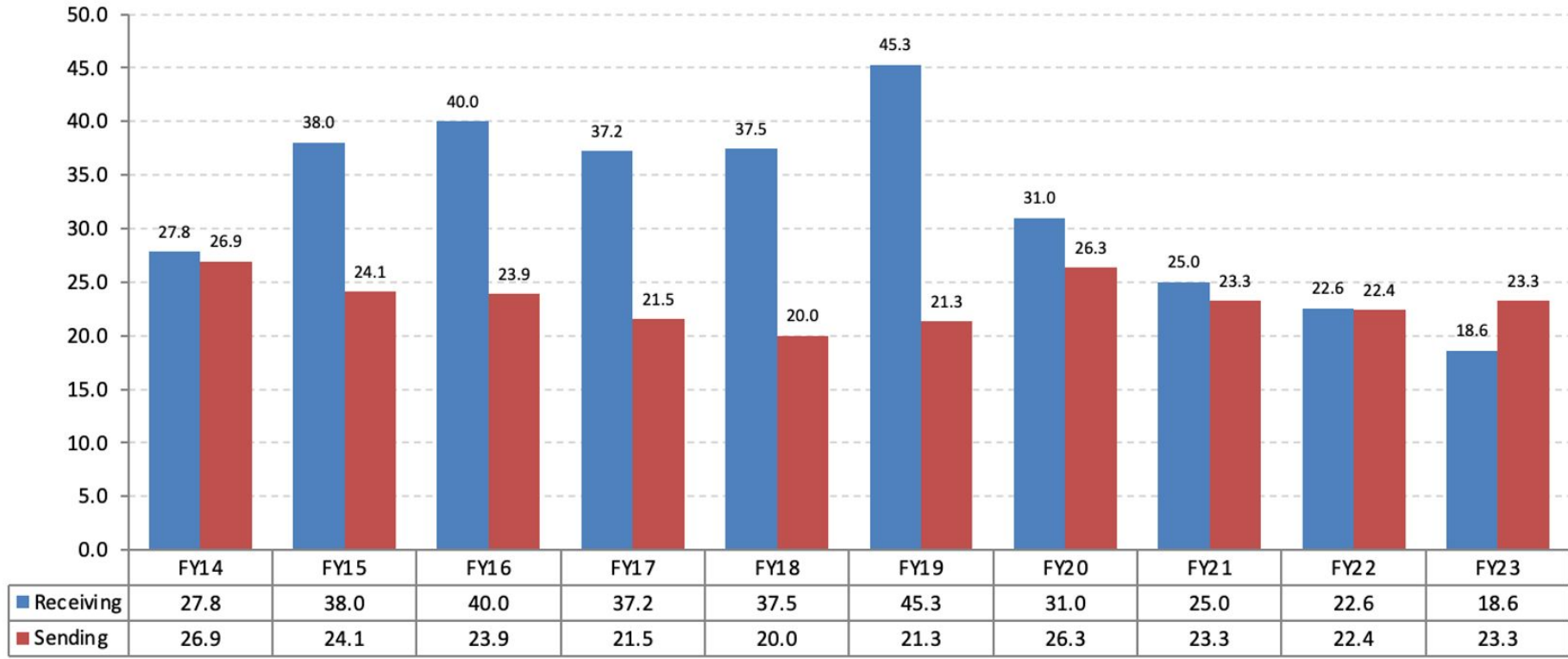


The inter-district school choice program is governed by G.L. c. 76, § 12B



- Participating districts should use the program to fill empty seats, not create new classrooms
- Tuition is paid by the sending district to the receiving district
- Transportation is provided by the family unless indicated by a student's IEP
- Receiving districts must use a random selection process to admit students
- Students enrolled in school choice have the same rights as resident students
- **Even if your district does not participate in School Choice, students can still opt to attend other districts**
- Once a student is admitted in the school choice program the student does not need to reapply each year

Georgetown school choice enrollment trends



Historical Trends



Students

**Where our students
are going:**

**Ipswich
Newburyport
Masconomet
Triton
Commonwealth Virtual**

**Where are students
who choice-in are
coming from:**

**Haverhill
Lawrence
Lynn
Methuen
Hamilton-Wenham
Pentucket
Triton
Beverly**

YEAR	CHOICED-OUT	COST	CHOICED-IN	REVENUE
2023	25	\$199,110	19	\$114,769
2022	23	\$235,896	23	\$143,859
2021	24	\$261,515	25	\$175,344
2020	27	\$246,670	31	\$214,830
2019	22	\$209,508	45	\$267,403
2018	20	\$195,846	38	\$203,158
2017	22	\$204,522	38	\$186,408
2016	24	\$190,198	40	\$203,823

Financial Implications



School Choice
Base Tuition Rate
\$5,000

Year	CHOICED - IN		CHOICED - OUT		VIRTUAL SCHOOL	
	Students with Special Education	Special Education Revenue	Students with Special Education	Students with Special Education Cost	Virtual School students	Virtual School Cost
2022	2	\$31,059	6	\$97,211	9	\$79,092 (\$8,788 per student)
2023	1	\$21,618.62	6	\$51,976	9	\$82,656 (\$9184 per student)

Financial Implications Special Education and Virtual School



2024 Students
(31)

Grades Attending

Grade	# of Students
7th	1
9th	13
10th	9
11th	5
12th	3

Sending Districts

District	# of Students
Groveland	1
Boxford	2
Methuen	2
Haverhill	10
Lawrence	16

Questions

