

INVENTORY FORM B CONTINUATION SHEET

GEORGETOWN

90 Baldpate Road

MASSACHUSETTS HISTORICAL COMMISSION

Area(s) Form No.

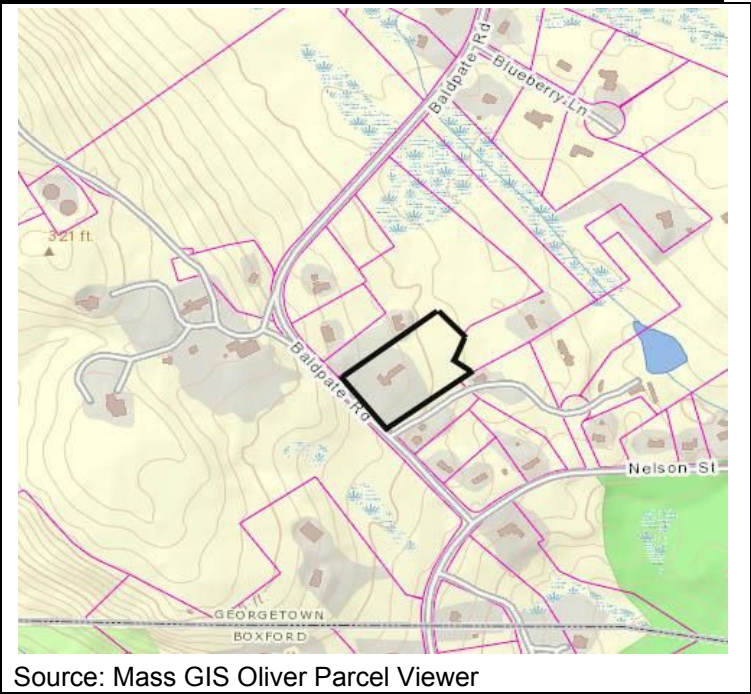
GEO.217

220 MORRISSEY BOULEVARD, BOSTON, MASSACHUSETTS 02125

FORM B – BUILDING

MASSACHUSETTS HISTORICAL COMMISSION
MASSACHUSETTS ARCHIVES BUILDING
220 MORRISSEY BOULEVARD
BOSTON, MASSACHUSETTS 02125

Photograph



Recorded by: Kathryn Grover & Neil Larson
Organization: Town of Georgetown Historical Commission
Date: June 2017

Locus Map (north at top)

INVENTORY FORM B CONTINUATION SHEET

GEORGETOWN

90 Baldpate Road

MASSACHUSETTS HISTORICAL COMMISSION

Area(s) Form No.

GEO.217

220 MORRISSEY BOULEVARD, BOSTON, MASSACHUSETTS 02125

Assessor's Number USGS Quad Area(s) Form Number

4-34

Georgetown

GEO.217

Setting: A rural area with farmland returning to woods and recent houses on large lots.**Town/City:** Georgetown**Place:** (*neighborhood or village*):
Baldpate Hill**Address:** 90 Baldpate Road**Historic Name:** Samuel C. & Ruth Tidd House & Barn**Uses:** Present: single family residential

Original: single family residential

Date of Construction: ca. 1820; ca. 1870**Source:** deeds & visual assessment**Style/Form:** Federal**Architect/Builder:** unknown**Exterior Material:**

Foundation: stone

Wall/Trim: wood clapboards

Roof: asphalt shingles

Outbuildings/Secondary Structures:

Barn (attached)

Major Alterations (*with dates*):Kitchen ell enlarged, 19th century

Barn added to rear, ca. 1875

Chimney moved and porch constructed on NW end,
mid-20th century

Window sash replaced

Condition: good**Moved:** no ☒ yes ☐ **Date:****Acreage:** 2.94 acres

INVENTORY FORM B CONTINUATION SHEET

GEORGETOWN

90 Baldpate Road

MASSACHUSETTS HISTORICAL COMMISSION

Area(s) Form No.

GEO.217

220 MORRISSEY BOULEVARD, BOSTON, MASSACHUSETTS 02125

☒ Recommended for listing in the National Register of Historic Places.

If checked, you must attach a completed National Register Criteria Statement form.

ARCHITECTURAL DESCRIPTION:

The Samuel C. & Ruth Tidd House is a two-story wood frame single dwelling with a gable roof built in ca. 1820. Its form and hall-parlor with center passage plan and chimneys on the rear wall represents a house type common in Georgetown in the late eighteenth and early nineteenth centuries. The five-bay front façade contains a center entrance, which is contained in an unusually large vestibule characteristic of other Georgetown examples. Closely set pairs of windows flank the entrance; their proud frames indicate the house is constructed with vertical planks as a structural method. The southeast end contains single windows on the first and second stories; a chimney on the back wall is contained in a two-story kitchen ell, which shares it with the front room. The wing has been bumped out with a two-story cross-gable wing, probably an early addition. The northwest gable end has lost its fenestration in alterations that moved the chimney to that end from the rear wall and the addition of a one-story sun porch with a shed roof. A one-story hyphen links the house to a large barn added sometime in the late nineteenth century. A central threshing bay with vehicle doors is flanked by a stable on the house end and a haymow and basement cow house on the opposing end.

Once part of a farm, the house and barn have been isolated on approximately three acres. Set back substantially from the road, the house is fronted by a lawn with a meadow occupying the southerly section of the parcel; the rear of the property is returning to forest. A driveway enters the center of the frontage and passes the southeast end of the house terminating at a parking area in front of the barn.

HISTORICAL NARRATIVE

In September 1819, the sisters and brothers of Stephen Mighill (1793-1819) and their spouses deeded 24 acres of land on the east side of Baldpate Road to their sister "Ruthy" and her husband Samuel Charles Tidd (often spelled Tidds in early vital records).¹ Stephen Mighill was the son of David Mighill (1736-1812) and Huldah Dole Mighill (1745-1812) and the grandson of Deacon Stephen Mighill (1707-83), who built the oldest part of Baldpate Inn, on the west side of Baldpate Road north of this tract, in 1733.

Samuel C. Tidd was born in 1784 in Rowley to Samuel and Ruhanna Richardson Tidd and married Ruth Mighill (1784-1857) in 1813. The Tidds probably built their house immediately, and the 1830 map of Georgetown attaches the name "S.C. Tidd" to the house at what is now 90 Baldpate Road.

The 1850 census shows Samuel C. Tidd as a 65-year-old shoemaker living in a household with his wife Ruth, shown as owning \$1500 in real property, and five of their adult children—Charlotte Eliza (born 1821), Cyrus (1823-73), Ruth Mighill (born 1823), Charles Sumner (born 1828), and Emeline (born 1832). Their two oldest sons—Mighill Augustus (born 1814) and Luther Pierce (born 1818)—were in their own households; oldest daughter Harriet Braman Tidd had died in 1843 at the age of twenty-seven.² The 1850 agricultural census shows Tidd farming five improved acres; he had a horse, two cows, and a pig, grew hay, potatoes, and apples, and produced modest quantities of butter and cheese.

¹ Reverend Humphrey C. and Elizabeth Perley, Beverly MA; Dr. Moses D. and Irene Spofford, Rowley MA; and Dr. David Mighill and wife Betsey, Dunbarton NH, to Samuel C. and Ruthy Tidd, Roxbury MA, 24 September 1819, SECD 228:35. The grantors stipulated that the tract was "the whole of there rite of land that fell to Samuel C. Tidds and Ruthy Tidds his wife from there brother Stephen Mighill late of Rowley." The Tidds may have lived in Lunenburg, Massachusetts, at the time Luther was born in 1818; some records list Lunenburg, others Georgetown, as his place of birth.

² Mighill Tidd moved to Iowa City, IA, where he died in 1869.

INVENTORY FORM B CONTINUATION SHEET

GEORGETOWN

90 Baldpate Road

MASSACHUSETTS HISTORICAL COMMISSION

Area(s) Form No.

GEO.217

220 MORRISSEY BOULEVARD, BOSTON, MASSACHUSETTS 02125

In 1854, son Luther P. Tidd married Sarah Mighill Nelson, his second wife, and his parents deeded their homestead to him the same year. Luther and Sarah Tidd moved in to his parents' household, as the 1855 census documents. Samuel and Ruth Tidd died within a month of each other—Samuel of pneumonia on 19 October 1857 and Ruth of consumption on 8 November. Unaccountably the 1860 census shows Luther and Sarah Tidd with only personal property and Cyrus, a shoemaker, enumerated in the next household with \$1800 in real property, though Cyrus had deeded his interest in the property to Luther in December 1855.³ The 1865 census shows Luther Tidd and his wife and son Wilson, born in 1861, in the household with two boarders, one of them a housekeeper.

Luther Tidd owned and occupied the 90 Baldpate Road property until 1879, when he sold it to farmer Henry E. Perley. The 1880 census shows Perley and his wife Lydia on the same page as Luther Tidd and his third wife Elizabeth P Chaplin Tidd, whom he married in 1873; son Wilson Tidd deeded his interest in the homestead and two other parcels to Perley in 1881.⁴ Perley was a Boxford native but had been living and farming in this Georgetown neighborhood since at least 1860. His wife, Lydia Howe Gould Perley of Middleton, died in 1882, and the 1900 census shows Perley living with his sister Elizabeth, a farm laborer, and a housekeeper.

Henry E. Perley died in 1905, but he may have left this property by the early 1890s and moved to another house close by; the town directory for 1905, the year he died, shows him on Nelson Avenue. Though the chain of title is cloudy, the 90 Baldpate Road property appears to have been acquired by 1891 by Harriet Newell Peabody Towne (1816-1902) and her son Alden Israel Towne (1861-1926), who both lived in Haverhill. After Alden Towne's death it passed to son Alfred E. Towne and daughter Jessie Goodhue, who sold it in 1937 to Myles K. and Marion J. Towne. By 1942 Georgetown Savings Bank owned the property and sold it the next year to an entity called Baldpate Inc., which subdivide the property in 1971 and sold it two years later to current owner Mary L. Shapiro.⁵

BIBLIOGRAPHY and/or REFERENCES

- Arrington, Benjamin F., ed. *Municipal History of Essex County in Massachusetts*. New York: Lewis Historical Publishing Co., 1922.
- Assessor's Records, Georgetown and Rowley. 1883, 1902, 1920, 1933.
- Biographical Review, Containing Life Sketches of Leading Citizens of Essex County, Massachusetts*. Boston: Boston Biographical Review Publishing Co., 1897. ONLINE
- Bureau of the Census. United States Census, 1790-1930.
- Chute, Wm. E. *A Genealogy and History of the Chute Family in America*. N.p. 1894.
- Field, Jane. *A Brief History of Georgetown Massachusetts 1838-1963*. Rev. ed. 1988. Georgetown: Georgetown Historical Commission, 1988.
- Gage, Thomas. *The History of Rowley, Anciently Including Bradford, Boxford, and Georgetown, from the Year 1639 to the Present Time*. Boston: F. Andrews, 1840.
- Hill, Edwin P. "History of Georgetown, Massachusetts." In *Standard History of Essex County, Massachusetts*. Edited by Cyrus M. Tracey, William E. Graves, and Henry M. Batchelder. Boston: C. F. Jewett, 1878.
- "Hull, Forrest P. *Georgetown: Story of One Hundred Years, 1838-1938*. 1938. Reprint. Georgetown, MA: Georgetown Historical Commission, 2006.
- Lainhart, Ann S. "1855 and 1865 Massachusetts State Censuses for Georgetown." Boston: Ann S. Lainhart, 1987.

³ Samuel C. and Ruth M. Tidss to Luther P. Tidss, 30 March 1854, SECD 516:97; Luther P. Tidd to Cyrus Tidd, 5 December 1855, SECD 594:220, deeded to Cyrus the same property on the condition that Cyrus support his mother and pay half of the expenses to support his father "in his usual style of living"; Cyrus deeded the property back to Luther on the same day. Luther P. Tidd to Cyrus Tidd, 5 December 1855, SECD 594:220; Cyrus Tidss to Luther P. Tidss, 5 December 1855, SECD 564:104.

⁴ Luther P. Tidd to Henry E. Perley, 29 March 1879, SECD 1029:46; Wilson S. Tidd to Henry E. Perley, 22 August 1881, SECD 1074:224.

⁵ Myles K. and Marion J. Towne, Haverhill, to Georgetown Savings Bank, 20 May 1942, SECD 3295:56; Georgetown Savings Banks to Baldpate Inc., 5 October 1943, SECD 3351:575; Baldpate Inc. to Mary L. Shapiro, 17 August 1973, SECD 6005:055. See also on "Plan of Land in Georgetown, Massachusetts Belonging to Baldpate Inc.," 9 September 1971, SECP 122:38, and "Revised Plan of Land in Georgetown, MA, Essex County, for Leo and Mary Shapiro," 17 May 1999, SECP 336:18. The 90 Baldpate property was Lot 1 on the 1971 plan and Lots 2b and 4 on the 1999 plan.

INVENTORY FORM B CONTINUATION SHEET

GEORGETOWN

90 Baldpate Road

MASSACHUSETTS HISTORICAL COMMISSION

Area(s) Form No.

GEO.217

220 MORRISSEY BOULEVARD, BOSTON, MASSACHUSETTS 02125

Maina, Gloria. "History of Georgetown, Massachusetts." Georgetown: Georgetown Historical Society, 1999.
Nelson, Henry M. "Town of Georgetown History." In Hurd, D. Hamilton. *History of Essex County, Massachusetts, with Biographical Sketches of Many of Its Pioneers and Prominent Men*. Vol. 1. Philadelphia: J. W. Lewis and Co., 1888.
HAVE ON CD
Southern Essex County Registry of Deeds, Salem, MA.
Souvenir of Old Home Week Georgetown Massachusetts July 25-28 1909. Boston: John G. Allen, 1909.

DIRECTORIES

The Essex County Directory. 1866. Boston: Innes & Niles, 1866.
Essex County History and Directory. Boston: C. A. & J. F. Wood, 1870.
Resident and Business Directory of Groveland and Georgetown, Mass., for 1885-1886. Needham, MA: Local Directory Publishing Co., 1885.
Georgetown, Boxford, Byfield, Newbury, and West Newbury, Massachusetts, Directory. Boston: W. E. Shaw, 1901-2, 1905.
North Essex Directory for Boxford, Georgetown, Merrimac, Newbury, Rowley, Salisbury, West Newbury. Salem, MA: Henry M. Meek Publishing Co., 1907, 1909-10, 1912, 1914-15, 1916-17, 1918, 1925.
Ipswich, Boxford, Byfield, Georgetown, Newbury, Rowley, Salisbury, Salisbury Beach, Topsfield, West Newbury Directory. Vol. 1, 1932-'34. Beverly, MA, and Portland, ME: Crowley & Lunt, 1932.
Haverhill, Mass. Suburban Directory for Georgetown, Groveland, Merrimac and West Newbury 1940. North Hampton, NH: Crosby Publishing Co., 1940.
Ipswich, Boxford, Georgetown, Middleton, Newbury, Rowley, Salisbury, Topsfield, West Newbury Directory 1957. New Haven, CT: Price & Lee Co., 1957.

MAPS

"Map of the Centre of Georgetown in 1800." In Perley, Sidney H., "Centre of Georgetown in the Year 1800." *The Essex Antiquarian: A Quarterly Magazine Devoted to the Biography, Genealogy, History, and Antiquities of Essex County, Massachusetts* 2, 7 (July 1898): 201.
Map of Georgetown in 1810 and 1840. In Gage, Thomas. *The History of Rowley, Anciently Including Bradford, Boxford, and Georgetown, from the Year 1639 to the Present Time*. Boston: F. Andrews, 1840. 320.
"Map of New Rowley Surveyed and Drawn by Philander Anderson 1830." Georgetown Historical Society.
Map of Georgetown. 1856. In Walling, H. F. *A Topographical Map Essex County Massachusetts*. Boston: Smith and Morley, 1856.
Atlas of Essex County, Massachusetts. Philadelphia: D. G. Beers and Co., 1872). Plates 59 and 61.
"Town of Georgetown Mass." and "Village of Georgetown Mass." In *Atlas of Essex County, Massachusetts* (Boston: George H. Walker, 1884).
"Georgetown, Mass. 1887." Drawn and Published by George E. Norris, Brockton, Massachusetts. Troy, NY: Burleigh Lithographic Establishment, 1887."
Insurance Maps of Haverhill Including Bradford, Groveland & Georgetown, Massachusetts. New York: Sanborn-Perris Map Co., 1893; Sanborn Map Co., 1906, 1949.

FIGURES

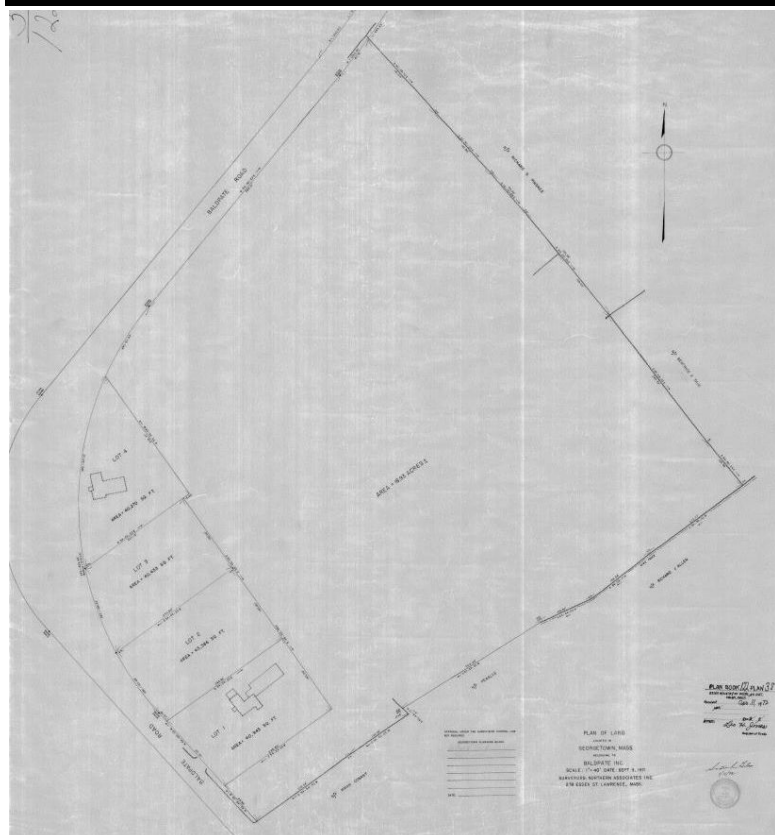
MASSACHUSETTS HISTORICAL COMMISSION

90 Baldpate Road

Area(s) Form No.

GEO.217

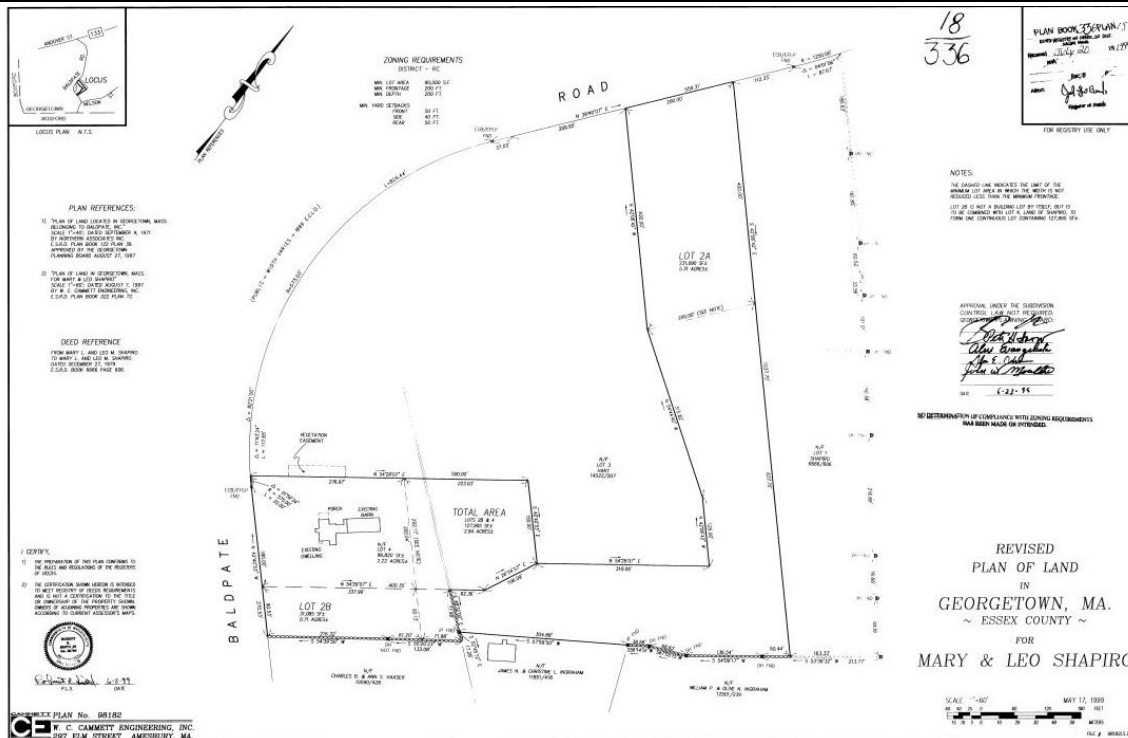
220 MORRISSEY BOULEVARD, BOSTON, MASSACHUSETTS 02125



Subject property pictured on Lot 1 on the 1971 Baldpate, Inc. plan

GEO.217

220 MORRISSEY BOULEVARD, BOSTON, MASSACHUSETTS 02125



Subject property sown as lots 2b and 4 on the 1999 Shapiro plan.

PHOTOGRAPHS (all photos by Neil Larson, 2017)

INVENTORY FORM B CONTINUATION SHEET

GEORGETOWN

90 Baldpate Road

MASSACHUSETTS HISTORICAL COMMISSION

Area(s) Form No.

GEO.217

220 MORRISSEY BOULEVARD, BOSTON, MASSACHUSETTS 02125



View from SW.

INVENTORY FORM B CONTINUATION SHEET

GEORGETOWN

90 Baldpate Road

MASSACHUSETTS HISTORICAL COMMISSION

Area(s) Form No.

GEO.217

220 MORRISSEY BOULEVARD, BOSTON, MASSACHUSETTS 02125



View from west.

INVENTORY FORM B CONTINUATION SHEET

GEORGETOWN

90 Baldpate Road

MASSACHUSETTS HISTORICAL COMMISSION

Area(s) Form No.

GEO.217

220 MORRISSEY BOULEVARD, BOSTON, MASSACHUSETTS 02125



View from south

INVENTORY FORM B CONTINUATION SHEET

GEORGETOWN

90 Baldpate Road

MASSACHUSETTS HISTORICAL COMMISSION

Area(s) Form No.

GEO.217

220 MORRISSEY BOULEVARD, BOSTON, MASSACHUSETTS 02125



Aerial view from south. Source: [bing.com/maps](https://www.bing.com/maps).



INVENTORY FORM B CONTINUATION SHEET

GEORGETOWN

90 Baldpate Road

MASSACHUSETTS HISTORICAL COMMISSION

Area(s) Form No.

GEO.217

220 MORRISSEY BOULEVARD, BOSTON, MASSACHUSETTS 02125

Aerial view from north. Source: bing.com/maps.

INVENTORY FORM B CONTINUATION SHEET

GEORGETOWN

90 Baldpate Road

MASSACHUSETTS HISTORICAL COMMISSION

Area(s) Form No.

GEO.217

220 MORRISSEY BOULEVARD, BOSTON, MASSACHUSETTS 02125

National Register of Historic Places Criteria Statement Form

Check all that apply:

- ☒ Individually eligible ☐ Eligible **only** in a historic district
- ☐ Contributing to a potential historic district ☐ Potential historic district

Criteria: ☒ A ☐ B ☒ C ☐ D

Criteria Considerations: ☐ A ☐ B ☐ C ☐ D ☐ E ☐ F ☐ G

Statement of Significance by Neil Larson

The criteria that are checked in the above sections must be justified here.

The Samuel C. and Ruth Tidd House is architecturally and historically significant and meets National Register Criteria A & C at a local level as a distinctive example of early nineteenth-century domestic and farm architecture in Georgetown. A two-story wood frame single dwelling with a gable roof built in ca. 1820, its form and hall-parlor with center passage plan and chimneys on the rear wall represents a house type common in Georgetown in the late eighteenth and early nineteenth centuries. The five-bay front façade contains a center entrance, which is contained in an unusually large vestibule characteristic of other Georgetown examples. Closely set pairs of windows flank the entrance; their proud frames indicate the house is constructed with vertical planks as a structural method. A one-story hyphen links the house to a large barn added sometime in the late nineteenth century. A central threshing bay with vehicle doors is flanked by a stable on the house end and a haymow and basement cow house on the opposing end. The house was built for Samuel C. & Ruth Tidd soon after they were married in 1813; Ruth Mighill Tidd's sisters and brothers deeded the land to her in 1819. Samuel C. Tidd was employed as a farmer and shoemaker. Their son, Luther P. Tidd, probably built the barn.