

INVENTORY FORM B CONTINUATION SHEET

GEORGETOWN

373 Andover Street

MASSACHUSETTS HISTORICAL COMMISSION

Area(s) Form No.

GEO.216

220 MORRISSEY BOULEVARD, BOSTON, MASSACHUSETTS 02125

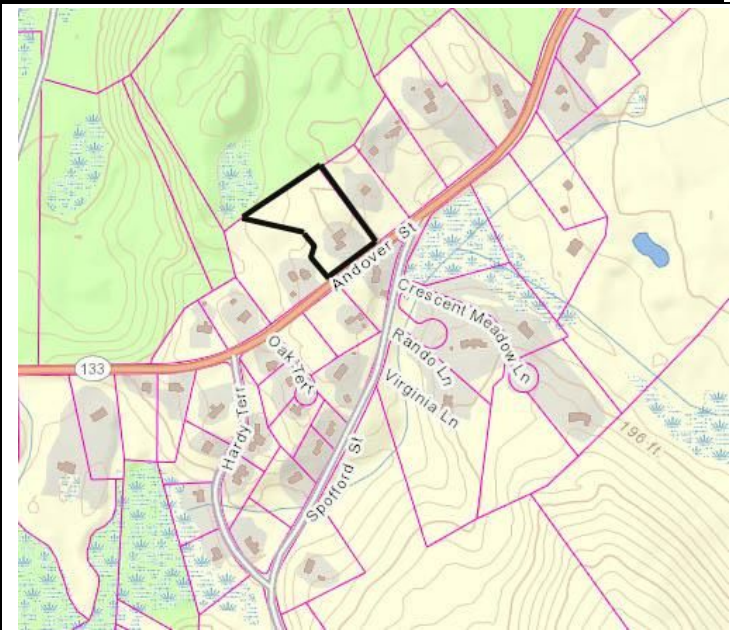
FORM B – BUILDING

MASSACHUSETTS HISTORICAL COMMISSION
MASSACHUSETTS ARCHIVES BUILDING
220 MORRISSEY BOULEVARD
BOSTON, MASSACHUSETTS 02125

Photograph



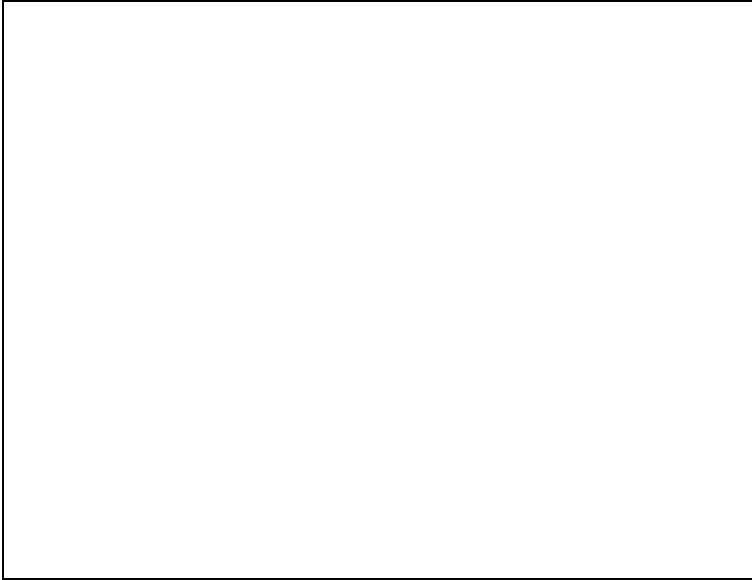
View from SE.



Source: Mass GIS Oliver Parcel Viewer

Recorded by: Kathryn Grover & Neil Larson
Organization: Town of Georgetown Historical Commission
Date: June 2017

Locus Map (north at top)



INVENTORY FORM B CONTINUATION SHEET

GEORGETOWN

373 Andover Street

MASSACHUSETTS HISTORICAL COMMISSION

Area(s) Form No.

GEO.216

220 MORRISSEY BOULEVARD, BOSTON, MASSACHUSETTS 02125

Assessor's Number USGS Quad Area(s) Form Number

2-19

Georgetown

GEO.216

Setting: Dense concentration of houses on highway leading west out of town center.

Town/City: Georgetown

Place: (*neighborhood or village*):
Spofford's Hill

Address: 373 Andover Street

Historic Name: Parker & Huldah Spofford House

Uses: Present: single family residential

Original: single family residential

Date of Construction: ca. 1800

Source: deeds & historic maps

Style/Form: Federal

Architect/Builder: unknown

Exterior Material:

Foundation: stone

Wall/Trim: wood clapboards

Roof: asphalt shingles

Outbuildings/Secondary Structures:
none

Major Alterations (*with dates*):

House renovated, exterior materials & fenestration replaced, large addition on rear, ca. 2001

Condition: fair

Moved: no ☒ yes ☐ **Date:**

Acreage: 2.06 acres

INVENTORY FORM B CONTINUATION SHEET

GEORGETOWN

373 Andover Street

MASSACHUSETTS HISTORICAL COMMISSION

Area(s) Form No.

GEO.216

220 MORRISSEY BOULEVARD, BOSTON, MASSACHUSETTS 02125

☐ Recommended for listing in the National Register of Historic Places.

If checked, you must attach a completed National Register Criteria Statement form.

ARCHITECTURAL DESCRIPTION:

The Parker and Huldah Spofford House is a two-story wood frame single dwelling with a gable roof built about 1800. Its form and hall-parlor with center passage plan and chimneys on the rear wall represents a house type common in Georgetown in the late eighteenth and early nineteenth centuries. The five-bay front façade contains a center entrance, which is a recent replacement as are the windows throughout the house. Based on its construction date, it is likely that the paneled corner pilasters and entablature with dentil band were added during the renovation. The fenestration on the southwest end appears to have been preserved, with one window centered on each of its three stories. This arrangement has been shifted towards the front on the northeast end where an open porch has been added. What probably originated as a kitchen ell on the northerly end of the rear façade has become a hyphen connecting the old house with a large addition including a two-car garage erected after 2001. The house is centered at the front of a deep lot subdivided from a much larger farm parcel. It is set back behind a large yard through which a semi-circular drive passes. A rear yard gives way the woods at the rear of the lot.

HISTORICAL NARRATIVE

In early January 1792, Rowley West Parish physician Amos Spofford (1751-1805) sold 25 acres of upland and swampland on "the Andover Rode" and bordering Spofford's Mills on the west to his older brother William Spofford (1746-1824). The sons of Daniel Spofford (1721-1803) and his wife Judith Follansbee, William and Amos Spofford were great-great grandsons of the immigrant John Spofford (1612-78), who bought land on Spofford's Hill in what became Georgetown in 1669. William had lived for a time in Andover but settled in Georgetown when he acquired this property. He probably built the house at 373 Andover Street for his son Parker (1780-1834) at his marriage to Huldah Spofford in 1800. His own house was north of 373 Andover Street, and in 1825, after William's death, his sons William and Parker deeded land to the south to their younger brother Daniel. All three are shown as householders in this section on the 1830 map of the town.¹

Parker Spofford and his first wife Hulda had at least three children—Gardner, Greenleaf, and Gage—between 1800 and 1804. After Huldah Spofford's death, about 1815, he married Hannah Wilkins and had nine more children between 1817 and his own death on the first of January in 1834; a tenth was born weeks after he died. Spofford's estate inventory shows him with a 30-acre homestead valued at \$900 and twenty other acres in town; his personal estate was appraised at only \$266.67. His widow and children remained in the house, but by 1850 all but two had left her household. That year's census shows Hannah Wilkins Spofford with \$1500 in real property in a household with her oldest daughter Emeline, then 32 years old, and her youngest daughter Martha Lincoln Spofford, the child born after her father's death in 1834. Three boarders and a grandchild also lived in the Andover Street house. Martha L. Spofford remained in the household with her mother and occasional boarders until Hannah Wilkins Spofford died in 1875, and she stayed on alone until 1898. In early February that year she sold all of her real estate, being "my house lot, and land adjoining, with Dwelling House, Barn, and Wood house thereon, containing about two acres, more or less, and situated on the northerly side of the road leading from Georgetown to Lawrence" as well as 15 acres of tillage on the old Andover road to Anson E. Woodbury.² Two years later she was living and working as a housekeeper in the home of leather dealer Harold F. Blake. She was still working there in 1910, and she died in Georgetown in 1916. Deeds continued to transfer these two parcels through 1958.

¹ Amos Spofford, Rowley, physician, to William Spofford, 5 January 1792, SECD 296:2; William Spofford and Parker Spofford to Daniel Spofford, Bradford, 23 April 1825, SECD 296:3. On the Spofford family see Jeremiah Spofford, *A Genealogical Record, Including Two Generations in the Female Lines, of Families Spelling Their Names Spofford, Spafford, Spafard, and Spaford* (Boston: Alfred Mudge and Son, 1888), 30-31, 37-41, 47-48, 63-64, 107-8, 114-15.

² Martha L. Spofford to Anson E. Woodbury, 7 February 1898, SECD 1537:426.

INVENTORY FORM B CONTINUATION SHEET

GEORGETOWN

373 Andover Street

MASSACHUSETTS HISTORICAL COMMISSION

Area(s) Form No.

GEO.216

220 MORRISSEY BOULEVARD, BOSTON, MASSACHUSETTS 02125

Born in 1868 in Georgetown, Anson E. Woodbury was the son of George and Sarah Wildes Woodbury, and by 1901 the town directory shows him as a milk dealer on Andover Street. In September 1894 he married, with her parents' written consent, sixteen-year-old Stella M. Goodale of Georgetown, and their first child Mary, was born in mid-January 1899. Anson Woodbury died of epilepsy in 1904 at the age of thirty-five, and in the same year his father, acting as guardian for Mary, sold the 373 Andover Street property to Ipswich native Emma S. Stone.³ Stella M. Woodbury remarried, to contractor John L. Wilson, in November 1905.

The 1910 census shows Emma S. Stone on this part of Andover Street with her husband George W. Stone, a native of Ipswich who worked as a carpenter. He was then farming, but by 1920 both he and his wife were retired and living in the same house. In December 1925, after his wife's death, George Stone sold the property to Theodore Prescott Driver and his wife Ethel, then living in Melrose.⁴ The Driver family owned 373 Andover Street until 1963. Born in Danvers in 1870, Theodore P. Driver worked as an electrician and electrical engineer. In 1894 he married Ethel Marion Boynton of Haverhill, and in 1900 the couple was living in Melrose with their two-year-old daughter Ruth. Driver did YMCA war work with the American Expeditionary Forces in France and Great Britain during the First World War, and by 1920 he had his own electrical shop in Melrose. By then daughter Ruth was working as a newspaper artist, and daughter Helen was fifteen years old. A son, Robert Putnam Driver, born in 1902, was not living in his parents' household.

The 1930 census shows Theodore and Ethel Driver on Andover Street, where he ran a poultry farm; his brother-in-law Herbert Boynton, though shown without occupation in the census, probably helped in the business. The couple is shown alone in the household in the 1940 census.

Theodore Driver died in 1942 and his wife Ethel Boynton Driver died two years later. Daughter Helen Driver, who lived in Madison, Wisconsin, apparently rented the house until 1963, when she sold the two-acre parcel with the house and another third of an acre to Harry J. and Beverly A. Zoglio of Lawrence, who subdivided the property in 1967 and sold the two-acre parcel that is 373 Andover Street the same year. Current owners Jeffrey A. and Jody M. Moore acquired the property in 2001.⁵

BIBLIOGRAPHY and/or REFERENCES

AmericanAncestors.org.

Ancestry.com.

Arrington, Benjamin F., ed. *Municipal History of Essex County in Massachusetts*. New York: Lewis Historical Publishing Co., 1922.

Assessor's Records, Georgetown and Rowley. 1883, 1902, 1920, 1933.

Biographical Review, Containing Life Sketches of Leading Citizens of Essex County, Massachusetts. Boston: Boston Biographical Review Publishing Co., 1897. ONLINE

Bureau of the Census. United States Census, 1790-1930.

Chute, Wm. E. *A Genealogy and History of the Chute Family in America*. N.p. 1894.

Field, Jane. *A Brief History of Georgetown Massachusetts 1838-1963*. Rev. ed. 1988. Georgetown: Georgetown Historical Commission, 1988.

Gage, Thomas. *The History of Rowley, Anciently Including Bradford, Buxford, and Georgetown, from the Year 1639 to the Present Time*. Boston: F. Andrews, 1840.

Hill, Edwin P. "History of Georgetown, Massachusetts." In *Standard History of Essex County, Massachusetts*. Edited by Cyrus M. Tracey, William E. Graves, and Henry M. Batchelder. Boston: C. F. Jewett, 1878.

³ George Woodbury, guardian of Mary L. Woodbury, minor child of late Anson E and Stella M Woodbury, to Emma S. Stone, 15 June 1904, SECD 1755:155.

⁴ George W. Stone to Theodore Prescott Driver and Ethel Marion Driver, Melrose, 21 December 1925, SECD 2662:179.

⁵ Helen I. Driver, Madison WI, to Harry J. Zoglio Jr. and Beverly A. Zoglio, Lawrence, 16 September 1963, SECD 5109:594; Steve D. and Sherri E. Goodknight, Brentwood TN, to Jeffrey A. and Jody M. Moore, 373 Andover St, 23 January 2001, SECD 16930:129. The 373 Andover property is Parcel A on "Plan of Land of Harry J. & Beverly A. Zoglio, Jr., Andover St, Georgetown, Mass.," SEC Plan 200 of 1967.

INVENTORY FORM B CONTINUATION SHEET

GEORGETOWN

373 Andover Street

MASSACHUSETTS HISTORICAL COMMISSION

Area(s) Form No.

GEO.216

220 MORRISSEY BOULEVARD, BOSTON, MASSACHUSETTS 02125

"Hull, Forrest P. *Georgetown: Story of One Hundred Years, 1838-1938*. 1938. Reprint. Georgetown, MA: Georgetown Historical Commission, 2006.

Lainhart, Ann S. "1855 and 1865 Massachusetts State Censuses for Georgetown." Boston: Ann S. Lainhart, 1987.

Maina, Gloria. "History of Georgetown, Massachusetts." Georgetown: Georgetown Historical Society, 1999.

Nelson, Henry M. "Town of Georgetown History." In Hurd, D. Hamilton. *History of Essex County, Massachusetts, with Biographical Sketches of Many of Its Pioneers and Prominent Men*. Vol. 1. Philadelphia: J. W. Lewis and Co., 1888. HAVE ON CD

Southern Essex County Registry of Deeds, Salem, MA.

Souvenir of Old Home Week Georgetown Massachusetts July 25-28 1909. Boston: John G. Allen, 1909.

DIRECTORIES

The Essex County Directory. 1866. Boston: Innes & Niles, 1866.

Essex County History and Directory. Boston: C. A. & J. F. Wood, 1870.

Resident and Business Directory of Groveland and Georgetown, Mass., for 1885-1886. Needham, MA: Local Directory Publishing Co., 1885.

Georgetown, Boxford, Byfield, Newbury, and West Newbury, Massachusetts, Directory. Boston: W. E. Shaw, 1901-2, 1905.

North Essex Directory for Boxford, Georgetown, Merrimac, Newbury, Rowley, Salisbury, West Newbury. Salem, MA: Henry M. Meek Publishing Co., 1907, 1909-10, 1912, 1914-15, 1916-17, 1918, 1925.

Ipswich, Boxford, Byfield, Georgetown, Newbury, Rowley, Salisbury, Salisbury Beach, Topsfield, West Newbury Directory. Vol. 1, 1932-'34. Beverly, MA, and Portland, ME: Crowley & Lunt, 1932.

Haverhill, Mass. Suburban Directory for Georgetown, Groveland, Merrimac and West Newbury 1940. North Hampton, NH: Crosby Publishing Co., 1940.

Ipswich, Boxford, Georgetown, Middleton, Newbury, Rowley, Salisbury, Topsfield, West Newbury Directory 1957. New Haven, CT: Price & Lee Co., 1957.

MAPS

"Map of the Centre of Georgetown in 1800." In Perley, Sidney H., "Centre of Georgetown in the Year 1800." *The Essex Antiquarian: A Quarterly Magazine Devoted to the Biography, Genealogy, History, and Antiquities of Essex County, Massachusetts* 2, 7 (July 1898): 201.

Map of Georgetown in 1810 and 1840. In Gage, Thomas. *The History of Rowley, Anciently Including Bradford, Boxford, and Georgetown, from the Year 1639 to the Present Time*. Boston: F. Andrews, 1840. 320.

"Map of New Rowley Surveyed and Drawn by Philander Anderson 1830." Georgetown Historical Society.

Map of Georgetown. 1856. In Walling, H. F. *A Topographical Map Essex County Massachusetts*. Boston: Smith and Morley, 1856.

Atlas of Essex County, Massachusetts. Philadelphia: D. G. Beers and Co., 1872). Plates 59 and 61.

"Town of Georgetown Mass." and "Village of Georgetown Mass." In *Atlas of Essex County, Massachusetts* (Boston: George H. Walker, 1884).

"Georgetown, Mass. 1887." Drawn and Published by George E. Norris, Brockton, Massachusetts. Troy, NY: Burleigh Lithographic Establishment, 1887."

Insurance Maps of Haverhill Including Bradford, Groveland & Georgetown, Massachusetts. New York: Sanborn-Perris Map Co., 1893; Sanborn Map Co., 1906, 1949.

PHOTOGRAPHS (all photos by Neil Larson, 2017)

INVENTORY FORM B CONTINUATION SHEET

GEORGETOWN

373 Andover Street

MASSACHUSETTS HISTORICAL COMMISSION

Area(s) Form No.

GEO.216

220 MORRISSEY BOULEVARD, BOSTON, MASSACHUSETTS 02125



View from SW.

INVENTORY FORM B CONTINUATION SHEET

GEORGETOWN

373 Andover Street

MASSACHUSETTS HISTORICAL COMMISSION

Area(s) Form No.

GEO.216

220 MORRISSEY BOULEVARD, BOSTON, MASSACHUSETTS 02125



View from north. Source: bing.com/maps.