

INVENTORY FORM B CONTINUATION SHEET

GEORGETOWN

231 Andover Street

MASSACHUSETTS HISTORICAL COMMISSION

Area(s) Form No.

GEO.215

220 MORRISSEY BOULEVARD, BOSTON, MASSACHUSETTS 02125

FORM B – BUILDING

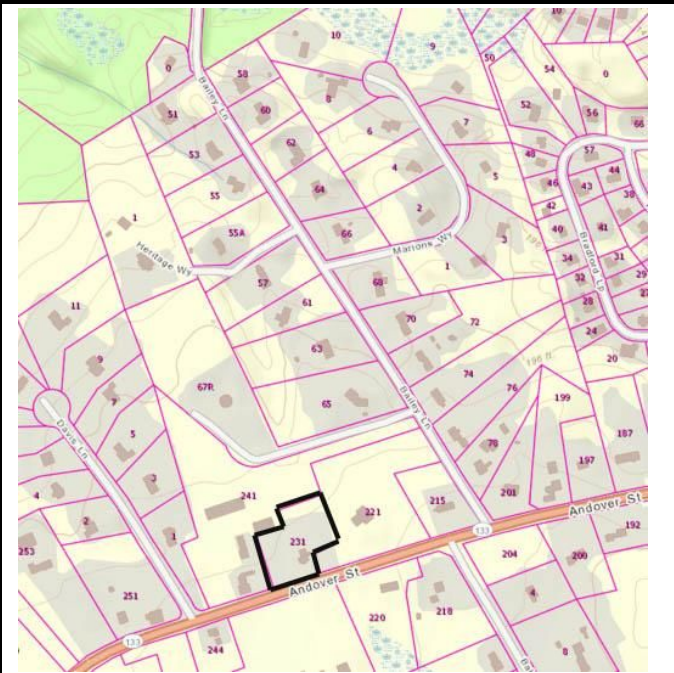
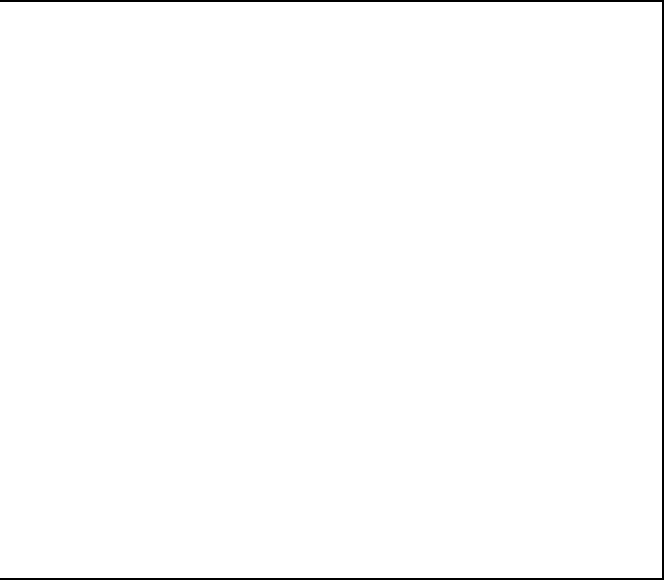
MASSACHUSETTS HISTORICAL COMMISSION
MASSACHUSETTS ARCHIVES BUILDING
220 MORRISSEY BOULEVARD
BOSTON, MASSACHUSETTS 02125

Photograph



View from SW.

Locus Map (north at top)



Source: Mass GIS Oliver Parcel Viewer

Recorded by: Kathryn Grover & Neil Larson
Organization: Town of Georgetown Historical Commission
Date: June 2017

INVENTORY FORM B CONTINUATION SHEET

GEORGETOWN

231 Andover Street

MASSACHUSETTS HISTORICAL COMMISSION

Area(s) Form No.

GEO.215

220 MORRISSEY BOULEVARD, BOSTON, MASSACHUSETTS 02125

Assessor's Number USGS Quad Area(s) Form Number

5-47D

Georgetown

GEO.215

Setting: Dense concentration of houses on highway leading west out of town center.

Town/City: Georgetown

Place: (*neighborhood or village*):
Spofford's Hill

Address: 231 Andover Street

Historic Name: Moses D. and Irene Spofford House

Uses: Present: single family residential

Original: single family residential

Date of Construction: ca. 1798

Source: deeds & visual assessment

Style/Form: Federal

Architect/Builder: unknown

Exterior Material:

Foundation: stone

Wall/Trim: vinyl clapboards

Roof: asphalt shingles

Outbuildings/Secondary Structures:
none

Major Alterations (*with dates*):
Front façade altered & dormer added, mid-20th cent.

Condition: fair

Moved: no ☒ yes ☐ **Date:**

Acreage: 0.97 acre

INVENTORY FORM B CONTINUATION SHEET

GEORGETOWN

231 Andover Street

MASSACHUSETTS HISTORICAL COMMISSION

Area(s) Form No.

GEO.215

220 MORRISSEY BOULEVARD, BOSTON, MASSACHUSETTS 02125

☐ Recommended for listing in the National Register of Historic Places.*If checked, you must attach a completed National Register Criteria Statement form.*

ARCHITECTURAL DESCRIPTION:

The Moses D. and Irene Spofford House is a story-and-a-half wood frame single dwelling with a gable roof with shallow eaves. The three-bay front façade has a central entrance within a shed roof porch with lattice sides flanked by pairs of windows. A shed dormer raised in the roof complete the mid twentieth-century cottage-style renovations made to the front. The gable ends contain two windows on the first story and a single window centered in the attic. A gable-roof sun porch has been added to the east end. The rear plane of the roof also contains a shed dormer, and a cross-gable ell is attached to the west end of the rear façade. A porch on the east side of the ell has been enclosed and a one-car garage with a shed roof was built against the back of the ell. The house is sited in the front of an irregular lot with lawns on all sides, which is all that remains of a much larger farm lot associated with the house and subdivided in 1989.

HISTORICAL NARRATIVE

In November 1751, Boxford housewright William Spafford (now usually Spofford) sold 120 acres in the section of Rowley called "the three thousand acres" to his older brother Daniel Spafford (1721-1803), also a housewright and already living in Rowley probably on some part of the land owned by his father John M. Spofford (1678-1735) on Spofford's Hill.¹ John M. Spofford was the grandson of the immigrant John Spofford (1612-78), who first bought land on Spofford's Hill in 1669. Daniel Spofford married Judith Follansbee of Rowley in 1741 and built a house on the south side of Andover Street shortly after his 1751 land purchase. Local historian Benjamin Arrington noted in 1922 that the date this house was built was then not certainly known but that the house was occupied by 1798, a conclusion possibly derived from the Federal Direct Tax listings of that year.

In his 1793 will and a 1799 codicil, Daniel Spofford left his dwelling house, barn, and his 21-acre homestead lot to his son Amos (1751-1805), and at Daniel's death in 1803 his inventory valued that homestead property at \$945. Son Amos, a physician, died just two years later, and his will left equal shares of his real property to his eight sons Moses Dole, Daniel M., Peabody, Richard S., Amos, Sewall, Mighill, and George. He left his wife Irene Dole Spofford her dower as well as four cows, five sheep, provisions for her and her four minor sons for a year, and the best of his two meetinghouse pews; he left his three daughters Irene, Betsey, and Judith each \$350 and a "convenient room in my house so long as they remain unmarried." Amos Spofford's inventory indicates that his house was on a 42-acre tract on the south side of Andover Street, and he owned another tract of 58 acres on the north side on which buildings also stood at the time of his death. All told, Amos Spofford owned almost 225 acres, and a committee appointed by the probate court divided this property into eight shares in April 1810. The court designated to son Moses Dole Spofford, also a physician, seven acres of the 58-acre tract with buildings on the north side of Andover Street bordering shares given to his brothers Richard and Amos. Son Daniel M. Spofford's share was the "old farm" on the south side of the road, with the proviso that he provide rooms for his mother and sisters as long as they remained single.

Moses Dole Spofford was born in 1773 and was practicing medicine like his father by the early 1790s. In 1798 he married Irene Mighill of Rowley, and their children Lavinia, Maryette, Harrison Braman, and Leverett Winslow were born between 1799 and 1809. It seems likely that the house at 231 Andover Street was built for him at the time of his marriage. Moses D. Spofford practiced medicine in Rowley for more than forty years and died at the age of fifty-nine in 1832. Three years later his four children transferred among each other a third of the house and outbuildings and various other parcels their father had owned to three of them; Harrison B. Spofford was then living just to the west in his uncle Sewall Spofford's home, which Sewall had

¹ William Spafford, Boxford, housewife, to Daniel Spafford, Rowley, housewife, 14 November 1751, SECD 110:36. On the Spofford family see Jeremiah Spofford, *A Genealogical Record, Including Two Generations in the Female Lines, of Families Spelling Their Names Spofford, Spafford, Spafard, and Spaford* (Boston: Alfred Mudge and Son, 1888), 30-31, 37-41, 47-48, 63-64, 107-8, 114-15.

INVENTORY FORM B CONTINUATION SHEET

GEORGETOWN

231 Andover Street

MASSACHUSETTS HISTORICAL COMMISSION

Area(s) Form No.

GEO.215

220 MORRISSEY BOULEVARD, BOSTON, MASSACHUSETTS 02125

deeded to his brother Moses D. Spofford in 1820.² Lavinia, Maryetta, and Leverett Spofford shared the 231 Andover Street house, and their names are attached to it on the 1856 map of Georgetown.³ The 1850 and 1855 censuses show Leverett W. Spofford and his wife Julia A. Adams Spofford, who married in 1844, in the household with Leverett's mother Irene Mighill Spofford and his sister Maryetta. Lavinia had married Orin Weston in 1835 and lived in one of the Weston family homes on West Main Street, and in 1870 she and her husband deeded their interest in her father's homestead to her brother Leverett.⁴

The 1870 census shows Leverett W. Spofford as a sixty-year-old farmer with \$4000 in real property in a household with his wife Julia, son Leverett, married daughter Julia, and Julia's husband Charles A. Aiken, who had married in June that year; both Leverett Jr. and Aiken worked on the farm. Leverett Spofford died in May 1881, and his homestead on Andover Street was valued at \$1800—the house, a barn, and “old barn, a shed, and six acres “by the buildings.” In 1882 Spofford's widow Julia and her two children deeded the property to the widow and Leverett Jr., who in 1885 sold the property to George Woodbury; Woodbury sold it a few months later to Joseph E. Johnson, who owned it for only four years.⁵ The property changed hands two more times until in 1905 Allan H. Wilde acquired it.⁶

Born in 1874 in Malden, Allan Hoyt Wilde was a publisher in his father's Boston firm W. A. Wilde Company, described in an 1888 issue of the *Boston Journal* as “the well-known publisher of Sunday School literature in this city.”⁷ The 1916 directory identifies him as a Boston publisher, but by 1920 the census shows him as a farmer living with his wife Myrtle Kimball Wilde, their children Nelson, Elizabeth, and Alfred, and an Irish-born domestic servant and her eleven-year-old son. The 1930 census again shows Wilde in publishing, by this time as treasurer of the firm, and his son Alfred was living in the 231 Andover Street house with his parents and clerking at the publishing firm. Allan Wilde died in Georgetown in November 1936; his wife died two years later. Son Alfred, then living in Belmont, and his married sister Elisabeth Wilde Dennison of Reading sold 231 Andover Street to Joseph Stack of Newton, who with his wife Gladys Vogt Stack owned and occupied the property until 1946. Stack was president of Stack and Carew, which made supplies for bakeries and ice cream manufacturers. The Stacks sold the Georgetown property in October of that year to Rex O. and Anne M. LeParmentier, and in December Joseph Stack died in Fort Lauderdale, Florida.⁸

From 1948 to 1995 Paul Muscavitz Jr. owned and occupied 231 Andover Street and placed it in trust in 1987. Current owners Dennis and Jennifer Harrell bought the property in 2012.⁹

BIBLIOGRAPHY and/or REFERENCES

AmericanAncestors.org.

Ancestry.com.

Arrington, Benjamin F., ed. *Municipal History of Essex County in Massachusetts*. New York: Lewis Historical Publishing Co., 1922.

² Sewall Spofford to Moses D. Spofford, physician, 1 April 1820, SECD 232:114. The description of the two parcels matches that of the share given Sewall in the 1810 distribution of his father's estate, except that the first 14.5-acre parcel had a dwelling house on it by 1820.

³ Lavinia Spofford, Marietta M. Spofford, and Harrison B. Spofford to Marietta M. Spofford, 8 May 1835, SECD 297:134; Lavinia Spofford, Marietta M. Spofford, and Harrison B. Spofford to Lavinia Spofford, 8 May 1835, SECD 297:133; Lavinia Spofford, Marietta M. Spofford, and Harrison B. Spofford to Leverett W. Spofford, 8 May 1835, SECD 297:136.

⁴ Lavinia S. and Orin Weston, Marietta M. Spofford, Irene M. and George P. Tyler to Leverett W. Spofford, 14 April 1870, SECD 802:159.

⁵ Leverett W. Spofford, Georgetown, and Charles A. and Julia A. Aikin, Haverhill, to Julia A. M. Spofford, 20 January 1882, SECD 1075:101; Julia A. M. Spofford, Georgetown, and Charles A. and Julia A. Aikin, Haverhill, to Leverett W. Spofford, 20 January 1882, SECD 1075:102; Leverett W. and Julia A. M. Spofford, Haverhill, to George Woodbury, 12 February 1885, SECD 1145:88; George Woodbury to Joseph E. Johnson, 2 May 1885, SECD 1149:229.

⁶ Alfred E. Towne, Haverhill, to Allan H. Wilde, 19 May 1905, SECD 1778:225.

⁷ See “Lucky Acton,” *Boston Journal*, 13 October 1888. *New York Times*, 28 February 1903, 30, notes that Wilde's father William A. Wilde had begun publishing books in 1868 and financed the construction of a public library in his native Acton, MA, in 1889-90.

⁸ Alfred Allan Wilde, Belmont, and Elisabeth Wilde Dennison, Reading, executors wills of Myrtle K. Wilde, to Joseph Stack, 16 September 1938, SECD 3157:374; Joseph and Gladys V. Stack to Rex O. and Anne M. LeParmentier, Danvers, 8 October 1946, SECD 3500:539.

⁹ Rex O. and Anne M. LeParmentier, Danvers, to Paul Muscavitz Jr. and Anastacia Muscavitz, Peabody, 17 November 1948, SECD 3633:275; Paul Muscavitz Jr. and Thelma Muscavitz, to H. R. Levinsky, trustee 231 Andover Street Realty Trust, 4 September 1987, SECD 9172:474; Dorothy E. Davies, Newburyport, to Dennis and Jennifer Harrell, 231 Andover St, 21 November 2012, SECD 31973:26. See also “Plan Showing Division of Land at 231 Andover Street, Georgetown, Massachusetts,” 11 August 1987, SECD 230:27.

INVENTORY FORM B CONTINUATION SHEET

GEORGETOWN

231 Andover Street

MASSACHUSETTS HISTORICAL COMMISSION

Area(s) Form No.

GEO.215

220 MORRISSEY BOULEVARD, BOSTON, MASSACHUSETTS 02125

Assessor's Records, Georgetown and Rowley. 1883, 1902, 1920, 1933.

Biographical Review, Containing Life Sketches of Leading Citizens of Essex County, Massachusetts. Boston: Boston Biographical Review Publishing Co., 1897. ONLINE

Bureau of the Census. United States Census, 1790-1930.

Chute, Wm. E. *A Genealogy and History of the Chute Family in America*. N.p. 1894.

Field, Jane. *A Brief History of Georgetown Massachusetts 1838-1963*. Rev. ed. 1988. Georgetown: Georgetown Historical Commission, 1988.

Gage, Thomas. *The History of Rowley, Anciently Including Bradford, Boxford, and Georgetown, from the Year 1639 to the Present Time*. Boston: F. Andrews, 1840.

Hill, Edwin P. "History of Georgetown, Massachusetts." In *Standard History of Essex County, Massachusetts*. Edited by Cyrus M. Tracey, William E. Graves, and Henry M. Batchelder. Boston: C. F. Jewett, 1878.

"Hull, Forrest P. *Georgetown: Story of One Hundred Years, 1838-1938*. 1938. Reprint. Georgetown, MA: Georgetown Historical Commission, 2006.

Lainhart, Ann S. "1855 and 1865 Massachusetts State Censuses for Georgetown." Boston: Ann S. Lainhart, 1987.

Maina, Gloria. "History of Georgetown, Massachusetts." Georgetown: Georgetown Historical Society, 1999.

Nelson, Henry M. "Town of Georgetown History." In Hurd, D. Hamilton. *History of Essex County, Massachusetts, with Biographical Sketches of Many of Its Pioneers and Prominent Men*. Vol. 1. Philadelphia: J. W. Lewis and Co., 1888. HAVE ON CD

Southern Essex County Registry of Deeds, Salem, MA.

Souvenir of Old Home Week Georgetown Massachusetts July 25-28 1909. Boston: John G. Allen, 1909.

DIRECTORIES

The Essex County Directory. 1866. Boston: Innes & Niles, 1866.

Essex County History and Directory. Boston: C. A. & J. F. Wood, 1870.

Resident and Business Directory of Groveland and Georgetown, Mass., for 1885-1886. Needham, MA: Local Directory Publishing Co., 1885.

Georgetown, Boxford, Byfield, Newbury, and West Newbury, Massachusetts, Directory. Boston: W. E. Shaw, 1901-2, 1905.

North Essex Directory for Boxford, Georgetown, Merrimac, Newbury, Rowley, Salisbury, West Newbury. Salem, MA: Henry M. Meek Publishing Co., 1907, 1909-10, 1912, 1914-15, 1916-17, 1918, 1925.

Ipswich, Boxford, Byfield, Georgetown, Newbury, Rowley, Salisbury, Salisbury Beach, Topsfield, West Newbury Directory. Vol. 1, 1932-'34. Beverly, MA, and Portland, ME: Crowley & Lunt, 1932.

Haverhill, Mass. Suburban Directory for Georgetown, Groveland, Merrimac and West Newbury 1940. North Hampton, NH: Crosby Publishing Co., 1940.

Ipswich, Boxford, Georgetown, Middleton, Newbury, Rowley, Salisbury, Topsfield, West Newbury Directory 1957. New Haven, CT: Price & Lee Co., 1957.

MAPS

"Map of the Centre of Georgetown in 1800." In Perley, Sidney H., "Centre of Georgetown in the Year 1800." *The Essex Antiquarian: A Quarterly Magazine Devoted to the Biography, Genealogy, History, and Antiquities of Essex County, Massachusetts* 2, 7 (July 1898): 201.

Map of Georgetown in 1810 and 1840. In Gage, Thomas. *The History of Rowley, Anciently Including Bradford, Boxford, and Georgetown, from the Year 1639 to the Present Time*. Boston: F. Andrews, 1840. 320.

"Map of New Rowley Surveyed and Drawn by Philander Anderson 1830." Georgetown Historical Society.

Map of Georgetown. 1856. In Walling, H. F. *A Topographical Map Essex County Massachusetts*. Boston: Smith and Morley, 1856.

Atlas of Essex County, Massachusetts. Philadelphia: D. G. Beers and Co., 1872). Plates 59 and 61.

"Town of Georgetown Mass." and "Village of Georgetown Mass." In *Atlas of Essex County, Massachusetts* (Boston: George H. Walker, 1884).

"Georgetown, Mass. 1887." Drawn and Published by George E. Norris, Brockton, Massachusetts. Troy, NY: Burleigh Lithographic Establishment, 1887."

INVENTORY FORM B CONTINUATION SHEET

GEORGETOWN

231 Andover Street

MASSACHUSETTS HISTORICAL COMMISSION

Area(s) Form No.

GEO.215

220 MORRISSEY BOULEVARD, BOSTON, MASSACHUSETTS 02125

Insurance Maps of Haverhill Including Bradford, Groveland & Georgetown, Massachusetts. New York: Sanborn-Perris Map Co., 1893; Sanborn Map Co., 1906, 1949.

INVENTORY FORM B CONTINUATION SHEET

GEORGETOWN

231 Andover Street

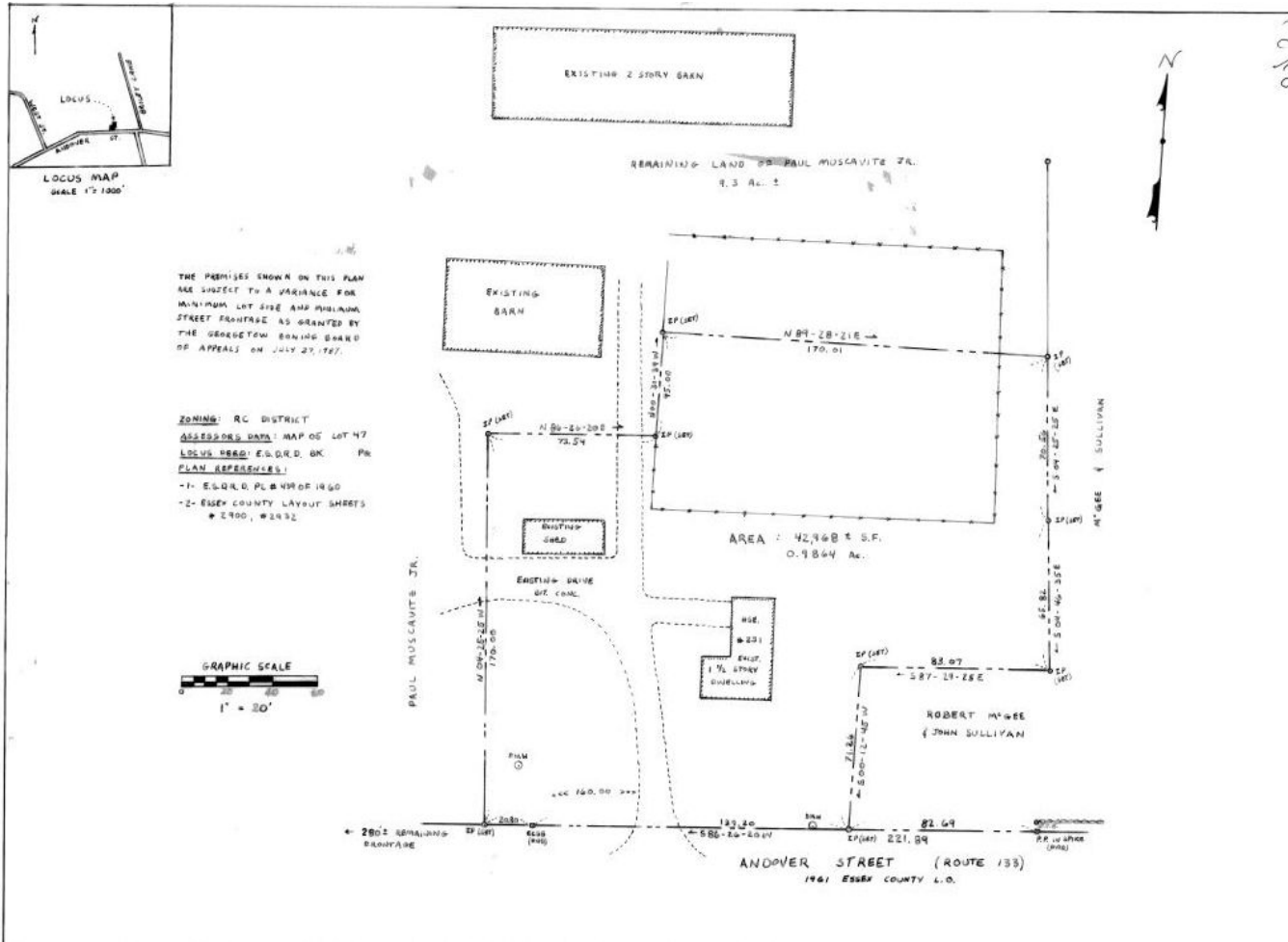
MASSACHUSETTS HISTORICAL COMMISSION

Area(s) Form No.

GEO.215

220 MORRISSEY BOULEVARD, BOSTON, MASSACHUSETTS 02125

FIGURES



"Plan Showing Division of Land at 231 Andover Street, Georgetown, Massachusetts," 11 Aug. 1987, SECP 230:27.

INVENTORY FORM B CONTINUATION SHEET

GEORGETOWN

231 Andover Street

MASSACHUSETTS HISTORICAL COMMISSION

Area(s) Form No.

GEO.215

220 MORRISSEY BOULEVARD, BOSTON, MASSACHUSETTS 02125

PHOTOGRAPHS (all photos by Neil Larson, 2017)



View from SE.

INVENTORY FORM B CONTINUATION SHEET

GEORGETOWN

231 Andover Street

MASSACHUSETTS HISTORICAL COMMISSION

Area(s) Form No.

GEO.215

220 MORRISSEY BOULEVARD, BOSTON, MASSACHUSETTS 02125



Aerial view from west. Source: [bing.com/maps](https://www.bing.com/maps)