

Appendix F - Conceptual Design Plans

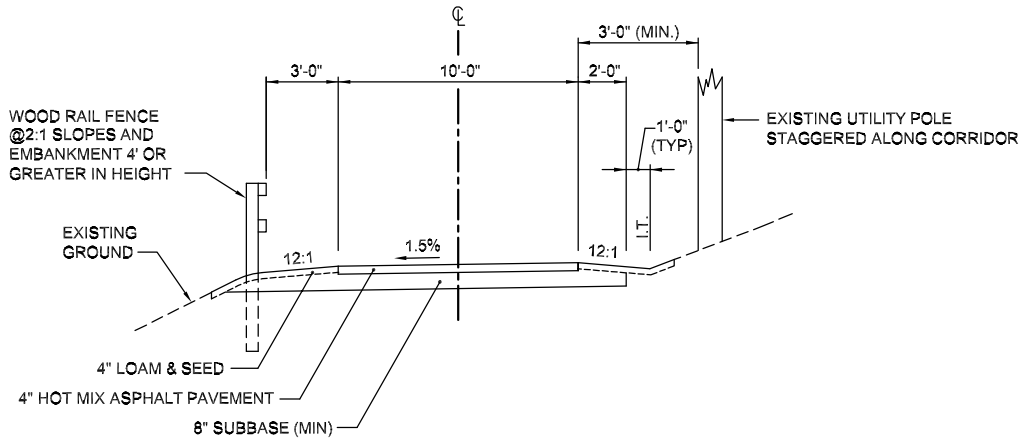
The following is a description key that briefly describes each photo included as an insert on the conceptual design plans:

Photo No.	Description
1	New Town bound marker
2	Entrance to Camp Dennison from corridor
3	Corridor at Nelson Street - Looking North
4	Nelson Street at Corridor - Looking West
5	Location of former Newburyport Railroad Baldpate Station
6	Collapsed cow pass just north of Brook Street
7	Brook Street abutter to corridor
8	Pond/wetland system west of corridor
9	Section of corridor in cut with retaining walls
10	Town-owned parcel for possible parking area
11	Drainage swale / wetland system located west of corridor
12	Andover Street (Route 133) at corridor - Looking West
13,14	65 Central Street – possible parking / rest area
15	Corridor at Andover Street (Route 133) – Looking South
16	Corridor at Andover Street (Route 133) – Looking North
17	Corridor connection at American Legion Park
18	Corridor at Pond Street – Looking South
19	Pond Street at corridor – Looking West
20	Bridge abutments at Pentucket Pond Brook
21	Mill Street at Corridor – Looking East
22,23	Existing access road bridge over the Parker River
24	Parker River Landing housing development
25	Blandings Turtle placard
26	Existing corridor in cut / ledge section
27	Existing pole offset – north of Thurlow Street
28,29	Stream tributary to Parker River
30	Existing access road bridge in Byfield (Newbury)
31	View of Parker River from corridor in Byfield (Newbury)

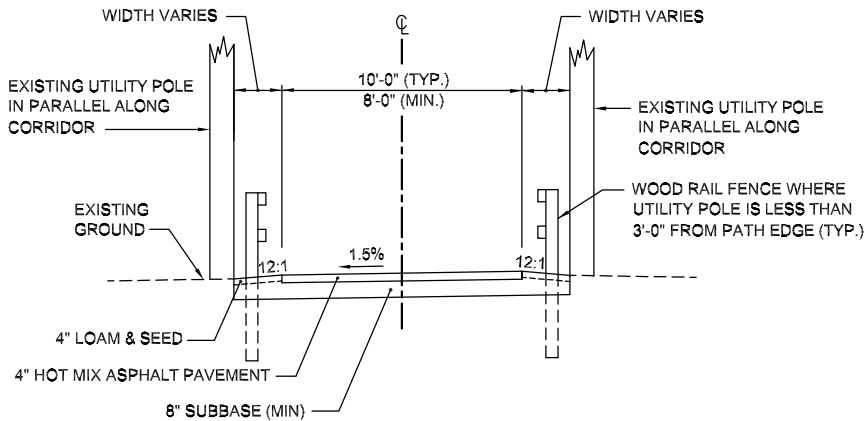
PAVEMENT NOTES

SHARED-USE PATH:

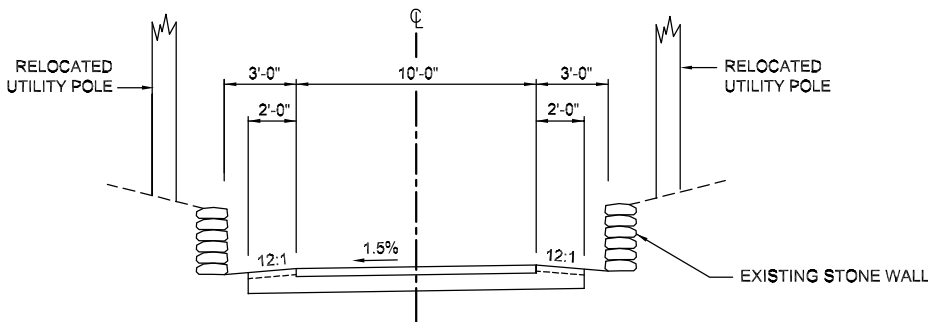
SURFACE COURSE:	(ONE LAYER) 1-1/2" HOT MIX ASPHALT - DENSE TOP COURSE
INTERMEDIATE COURSE:	(ONE LAYER) 2" HOT MIX ASPHALT - DENSE BINDER COURSE
BASE MATERIAL:	(ONE LAYER) 8" DENSE GRADED CRUSHED STONE



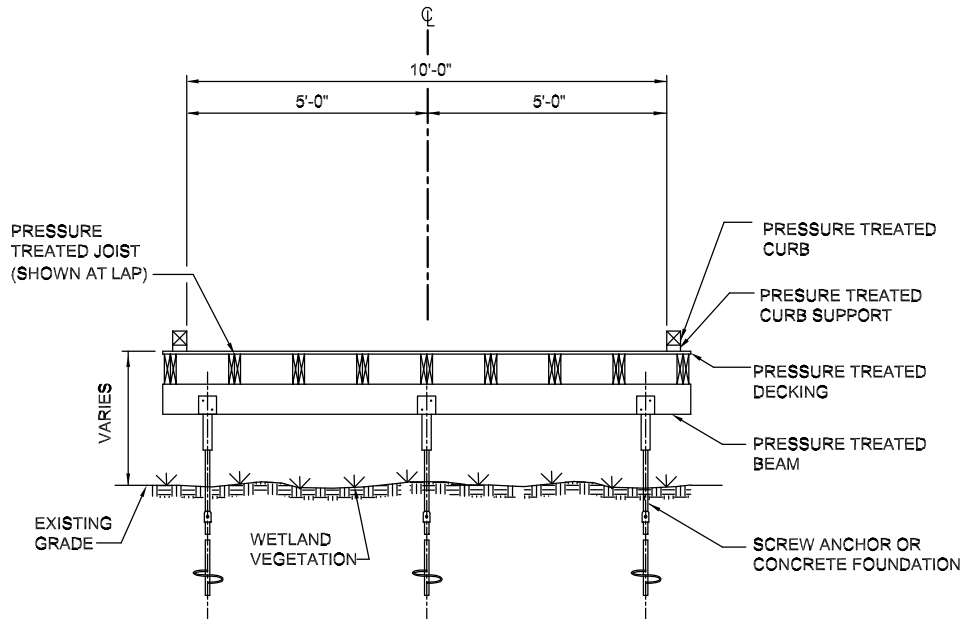
A TYPICAL SECTION
Scale: 1 inch = 8 feet



B CONSTRAINED SECTION
Scale: 1 inch = 8 feet



C RELOCATED POLE SECTION
Scale: 1 inch = 8 feet



D BOARDWALK SECTION AT WETLANDS
Scale: 1 inch = 4 feet

GEORGETOWN RECREATIONAL PATH
GEORGETOWN, MASSACHUSETTS

TYPICAL SECTIONS
AND PAVEMENT NOTES



FAY, SPOFFORD & THORNDIKE, LLC
ENGINEERS-PLANNERS-SCIENTISTS
BURLINGTON, MA

JULY 2007

SHEET NO. 1 OF 1

FS&T DWG. NO.			
QG-007			
DES	JAS	CHK	JKH
DR	JAS	CHK	JKH
EST	JAS	CHK	JKH
ENGINEER IN CHARGE			



GREAT POND DRIVE

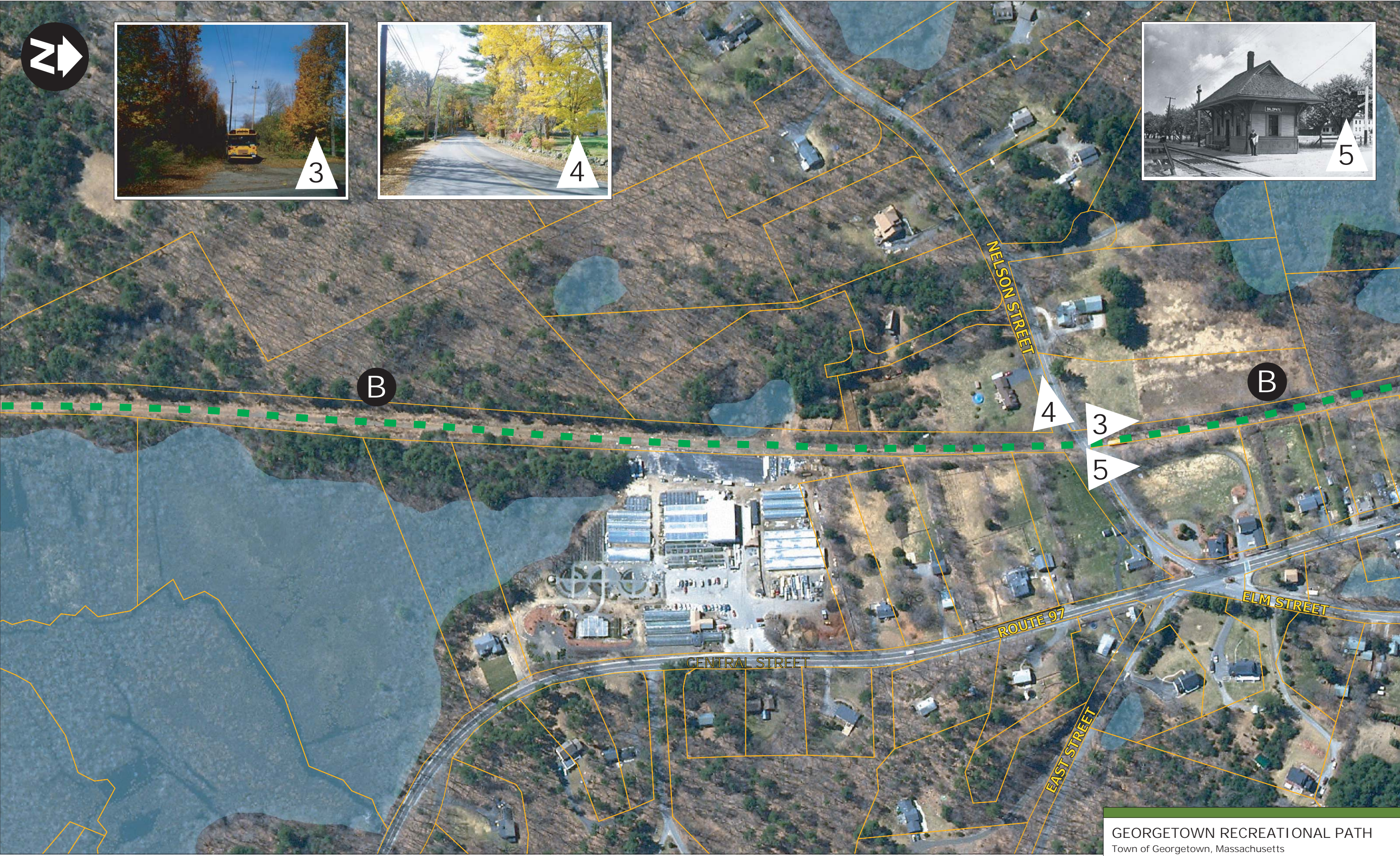
GEORGETOWN ROAD

BOXFORD
GEORGETOWN

1

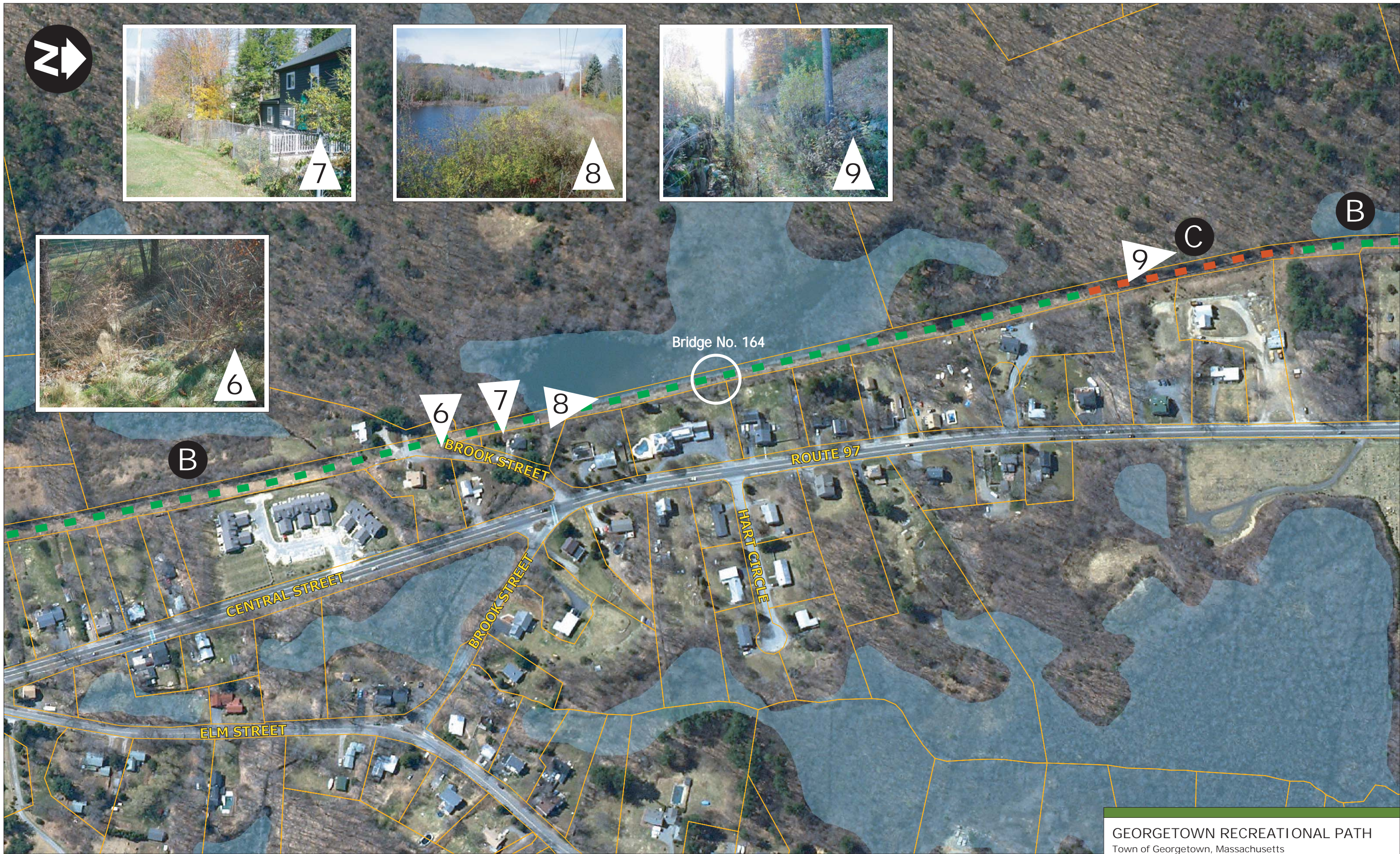
2

B



Data Source: GIS data obtained from Merrimack Valley Planning Commission and MA Office of Geographic and Environmental Information (MassGIS)





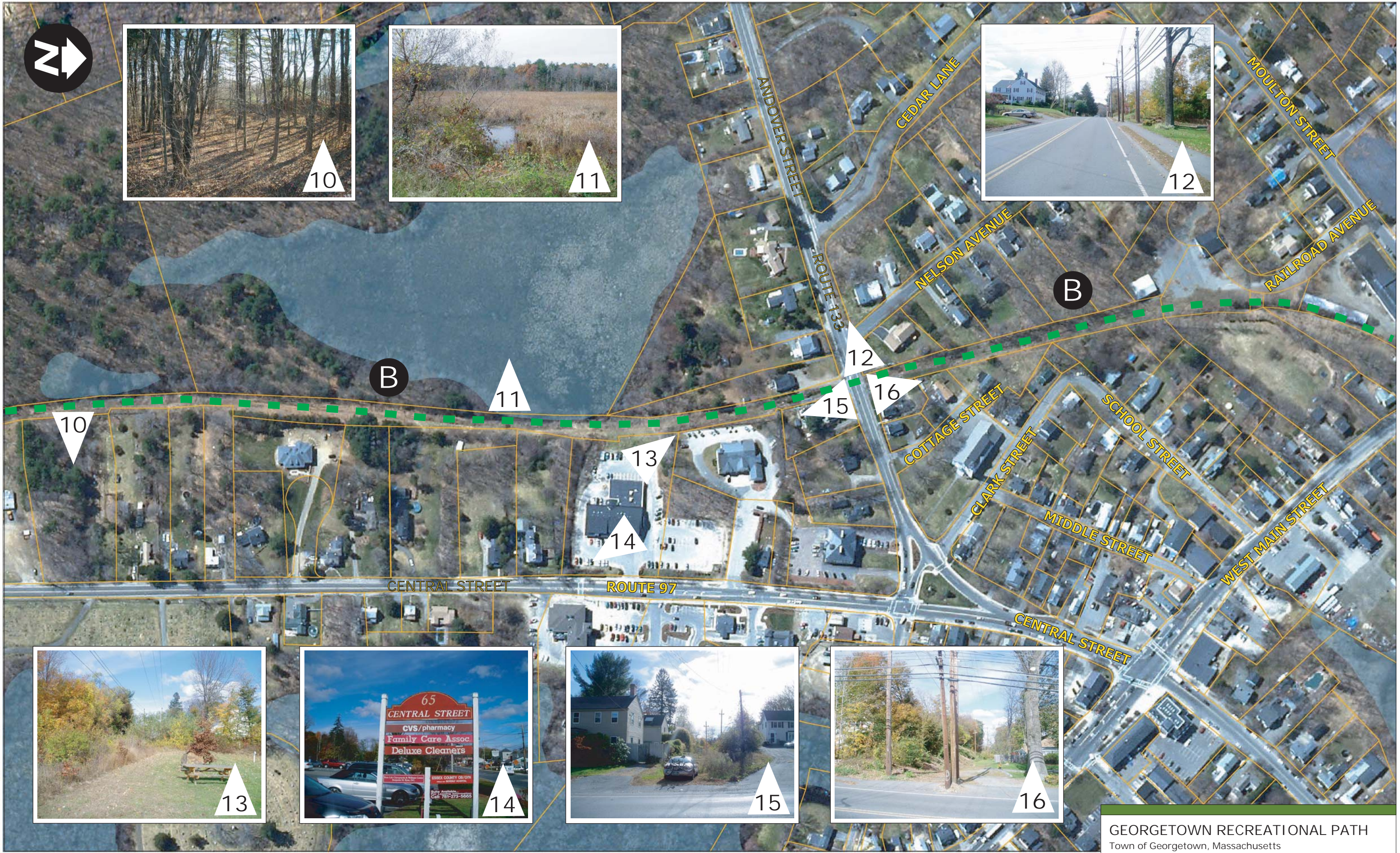
Data Source: GIS data obtained from Merrimack Valley Planning Commission and MA Office of Geographic and Environmental Information (MassGIS)

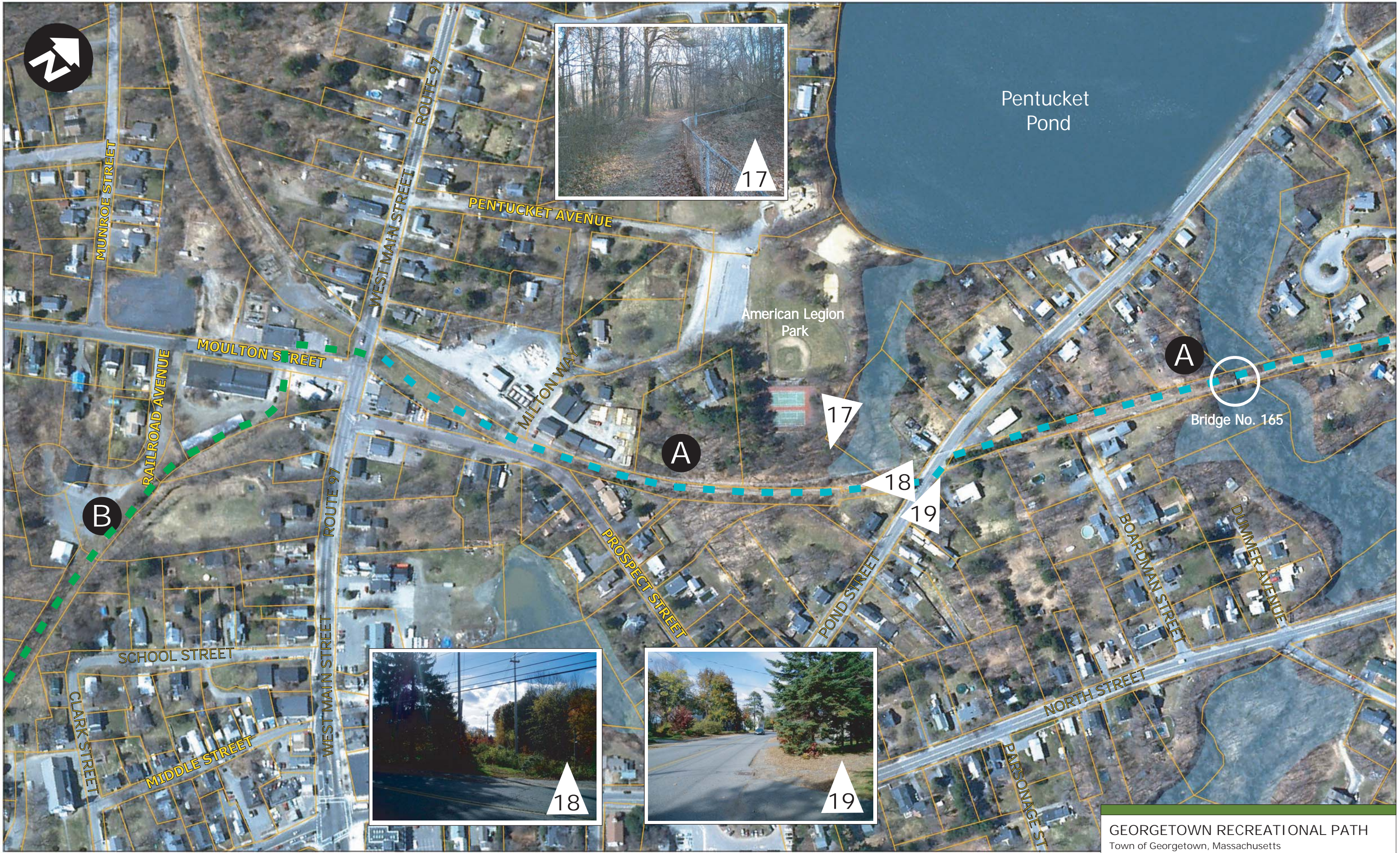
0 50 100 200 300 Feet

GEORGETOWN RECREATIONAL PATH
Town of Georgetown, Massachusetts

Conceptual Design Plans

Sheet 3 of 10





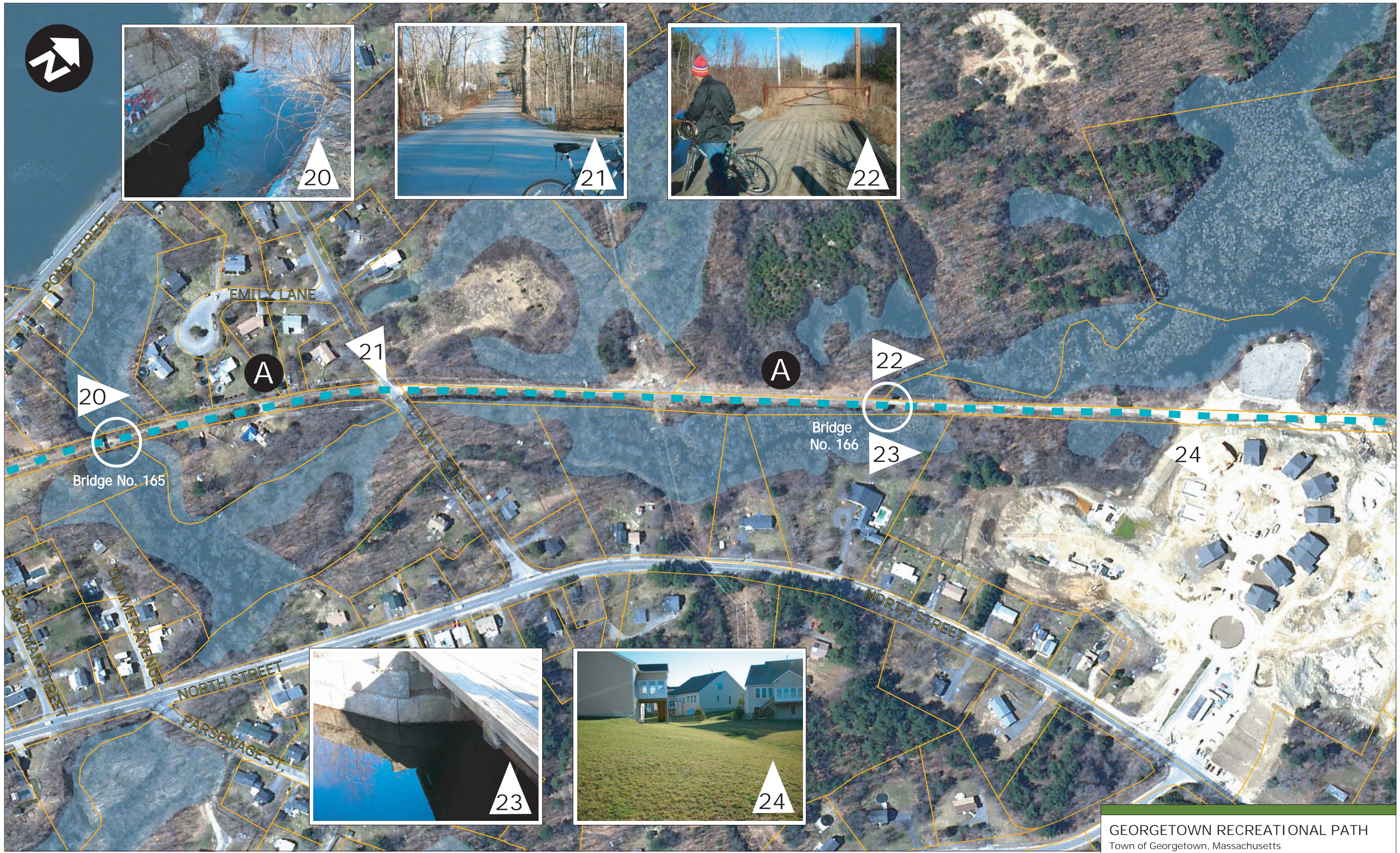
Data Source: GIS data obtained from Merrimack Valley Planning Commission and MA Office of Geographic and Environmental Information (MassGIS)

0 50 100 200 300 Feet

GEORGETOWN RECREATIONAL PATH
Town of Georgetown, Massachusetts

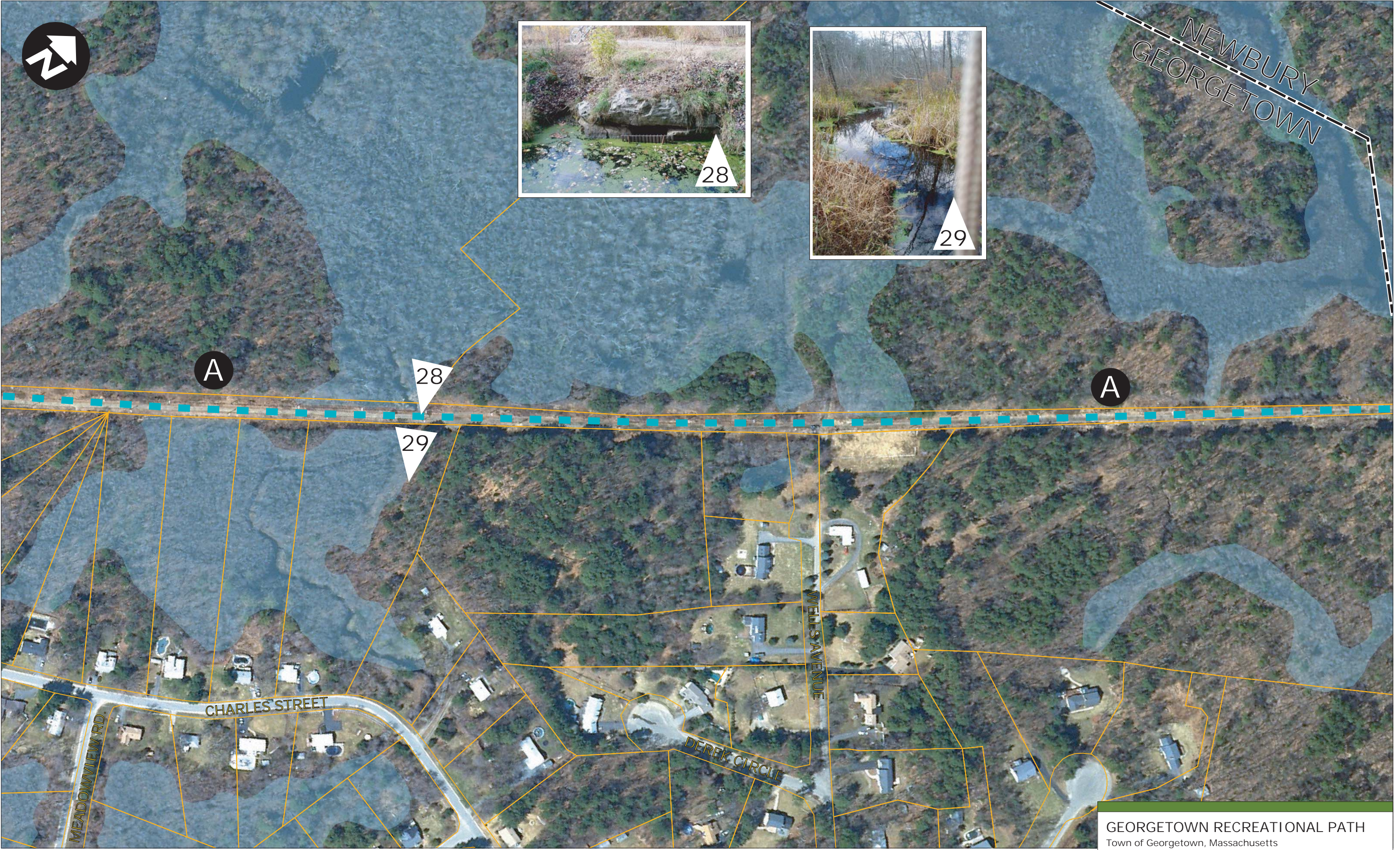
Conceptual Design Plans

Sheet 5 of 10

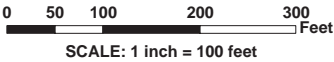








Data Source: GIS data obtained from Merrimack Valley Planning Commission and MA Office of Geographic and Environmental Information (MassGIS)





Data Source: GIS data obtained from Merrimack Valley Planning Commission and MA Office of Geographic and Environmental Information (MassGIS)

